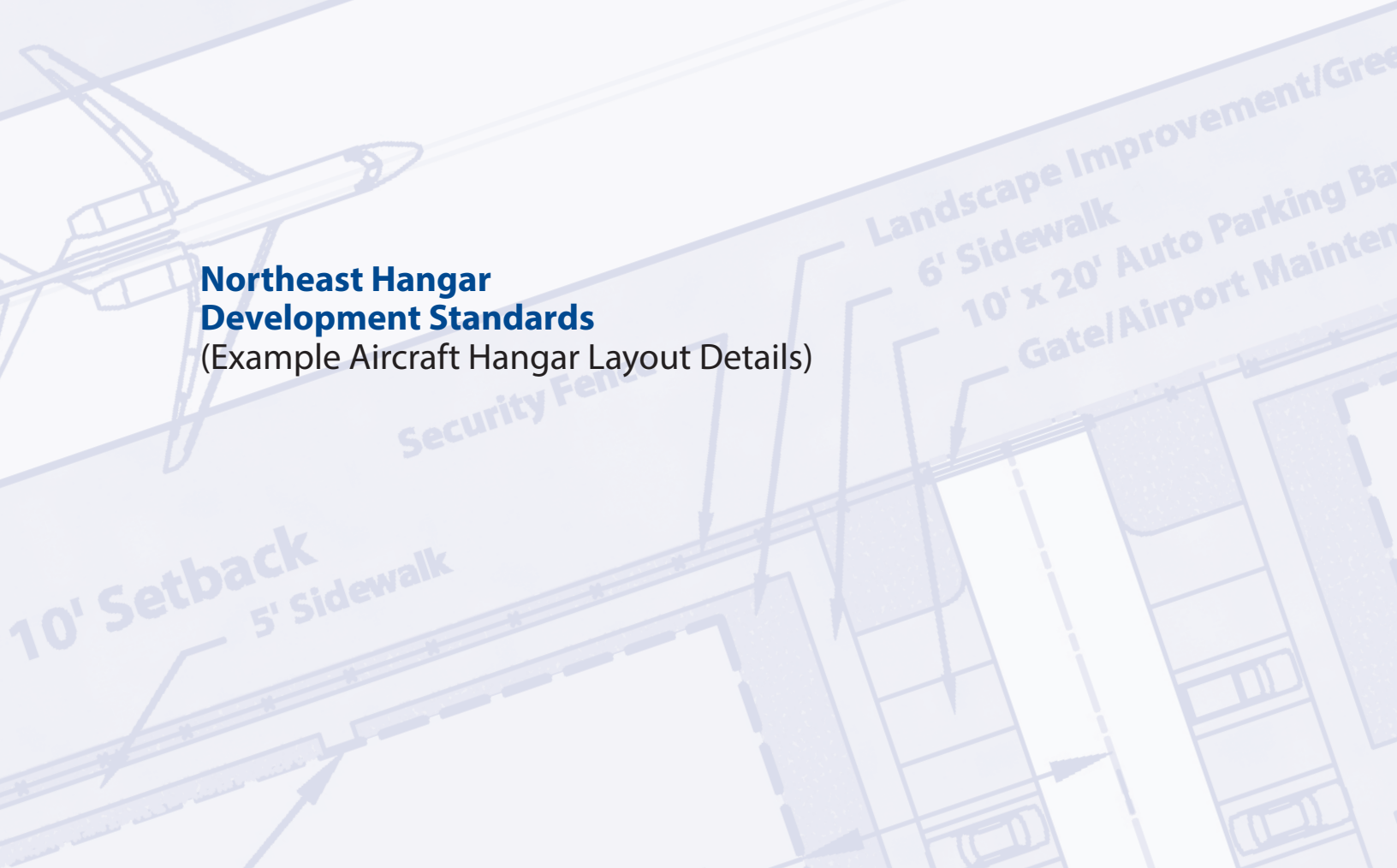


**Northeast Hangar
Development Standards**
(Example Aircraft Hangar Layout Details)



 Wiley Post Airport



**Mead
& Hunt**

Northeast Hangar Development Standards (Example Aircraft Hangar Layout Details)

October 2014



 Wiley Post Airport

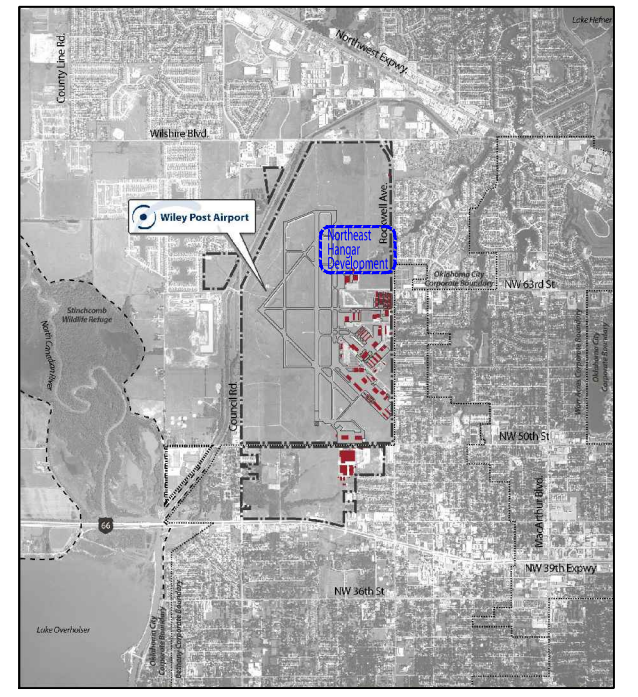
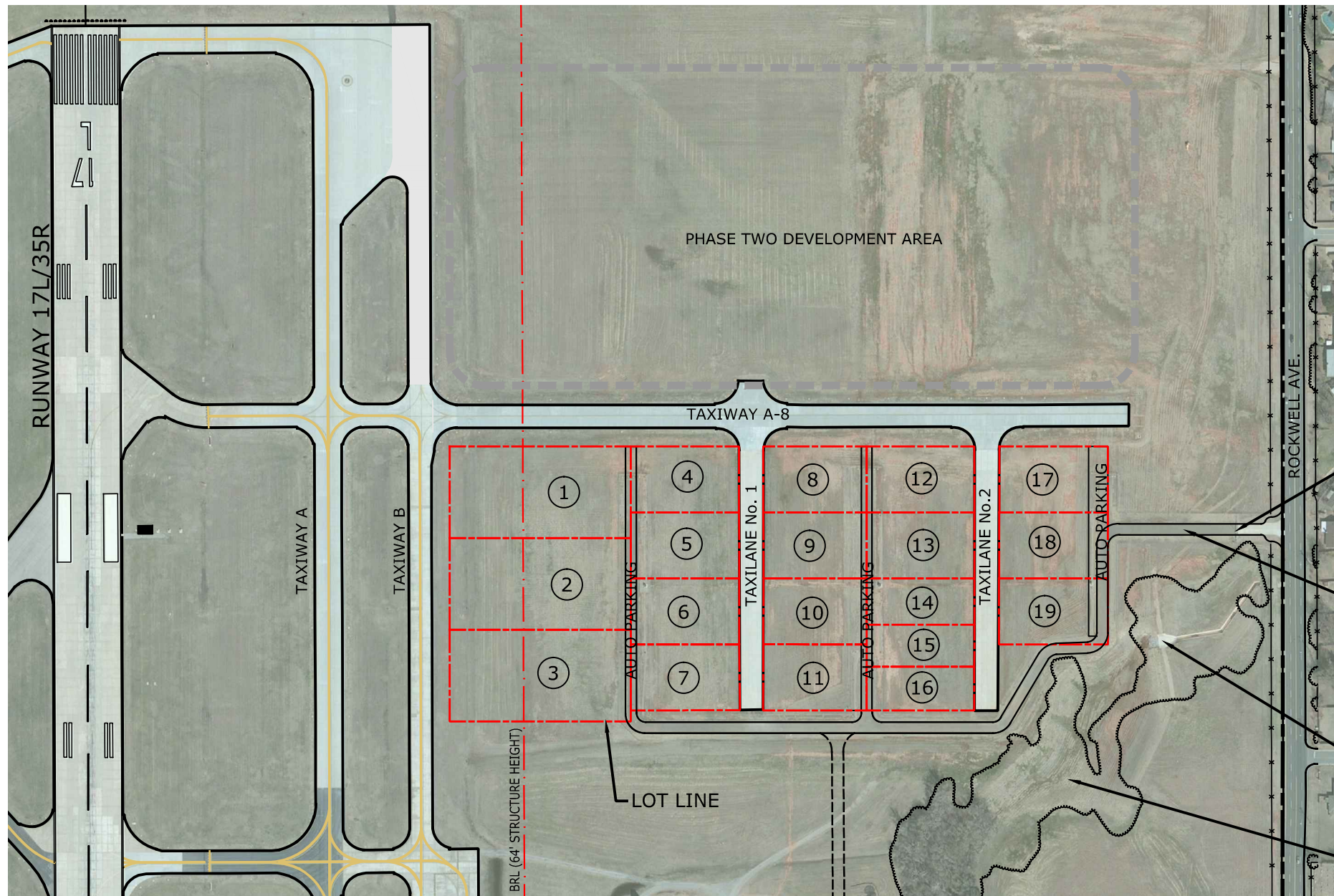
**Mead
& Hunt**

Cherry Street Building
1616 East 15th Street
Tulsa, Oklahoma 74120-6027
Phone Number. 918 585 8844
FAX Number. 918 585 8857
www.meadhunt.com



Attachments

Attachment 1	Northeast Hangar Development/Phase One Site Plan	1
Attachment 2	Aircraft Hangar Group I/Lot 1 Example Layout Detail	2
Attachment 3	Aircraft Hangar Group I/Lot 2 Example Layout Detail	3
Attachment 4	Aircraft Hangar Group II or III/Lots 4, 5, 8, & 9 Example Layout Detail	4
Attachment 5	Aircraft Hangar Group II or III/Lots 4, 5, 8, & 9 Example Layout Detail	5
Attachment 6	Aircraft Hangar Group II or III/Lots 10, 11, 14, 15 & 16 Example Layout Detail	6
Attachment 7	Aircraft Hangar Group II or III/Lots 10-12 & 15-17 Example Layout Detail	7



Vicinity Map



GRAPHIC SCALE IN FEET
 IMAGERY SOURCE: ESRI, DIGITALGLOBE, GEOEYE, I-CUBED, USDA, USGS, AEX, GETMAPPING, AEROGIRD, IGN, IGP, AND THE 615 USER COMMUNITY (FEB 28, 2011)

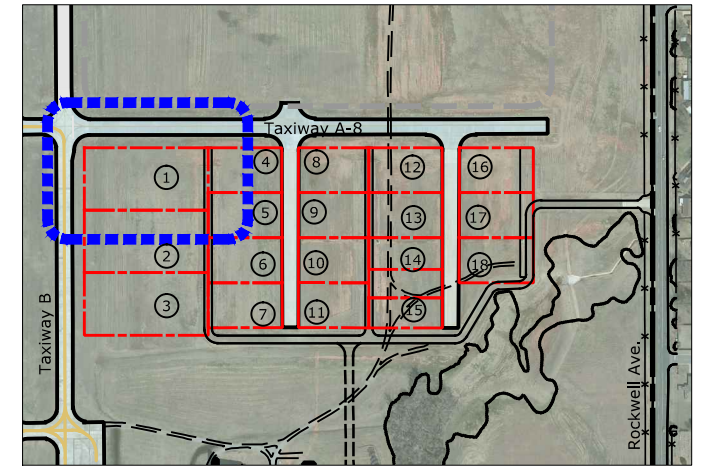
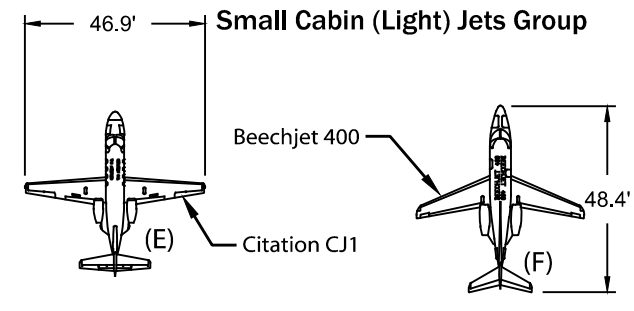
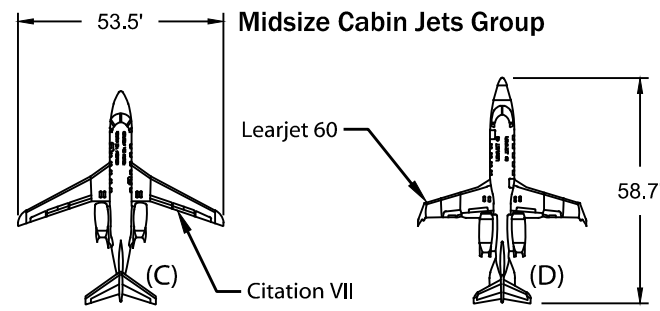
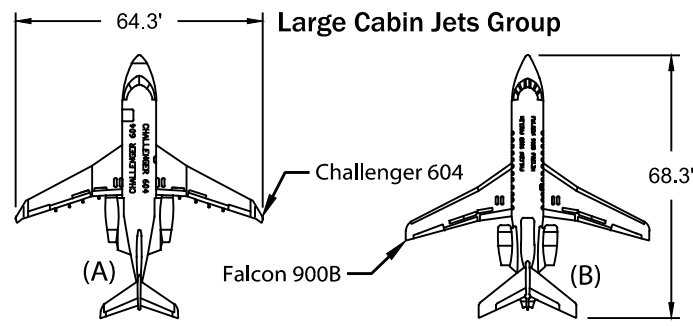
LOT	SQ.FT.	HANGAR/ BUILDING MIN SQ. FT. ¹	AIRCRAFT HANGAR GROUP ¹	AIRCRAFT ACCESS DOOR HEIGHT ¹	AIRCRAFT AIRSIDE ACCESS	APRON PARKING	AUTO PARKING
1	79,000	25,000	I	> 28 FT.	TAXIWAY B/APRON	YES	YES
2	79,000	20,000	I	> 28 FT.	TAXIWAY B/APRON	YES	YES
3	79,000	20,000	I	> 28 FT.	TAXIWAY B/APRON	YES	YES
4	33,400	10,000	II or III	< or = 28 FT.	TAXILANE No.1	OPTIONAL	YES
5	33,400	8,000	II or III	< or = 28 FT.	TAXILANE No.1	OPTIONAL	YES
6	33,400	8,000	II or III	< or = 28 FT.	TAXILANE No.1	OPTIONAL	YES
7	33,400	8,000	II or III	< or = 28 FT.	TAXILANE No.1	OPTIONAL	YES
8	33,400	10,000	II or III	< or = 28 FT.	TAXILANE No.1	OPTIONAL	YES
9	33,400	8,000	II or III	< or = 28 FT.	TAXILANE No.1	OPTIONAL	YES
10	33,400	12,000	II or III	< or = 28 FT.	TAXILANE No.1	OPTIONAL	YES
11	33,400	12,000	II or III	< or = 28 FT.	TAXILANE No.1	OPTIONAL	YES
12	33,400	10,000	II or III	< or = 28 FT.	TAXILANE No.2	OPTIONAL	YES
13	33,400	8,000	II or III	< or = 28 FT.	TAXILANE No.2	OPTIONAL	YES
14	23,700	6,000	II or III	< or = 28 FT.	TAXILANE No.2	OPTIONAL	YES
15	21,300	6,000	II or III	< or = 28 FT.	TAXILANE No.2	OPTIONAL	YES
16	22,200	6,000	II or III	< or = 28 FT.	TAXILANE No.2	OPTIONAL	YES
17	33,400	8,000	II or III	< or = 28 FT.	TAXILANE No.2	OPTIONAL	YES
18	33,400	8,000	II or III	< or = 28 FT.	TAXILANE No.2	OPTIONAL	YES
19	33,400	8,000	II or III	< or = 28 FT.	TAXILANE No.2	OPTIONAL	YES

¹ Minimum & maximum hangar sizes to be designed/approved/constructed in accordance with current International Building Code (IBC) and National Fire Protection Association (NFPA) 409 requirements.

Attachment 1 Northeast Hangar Development/
Phase One Site Plan



Aircraft Legend



Location Map

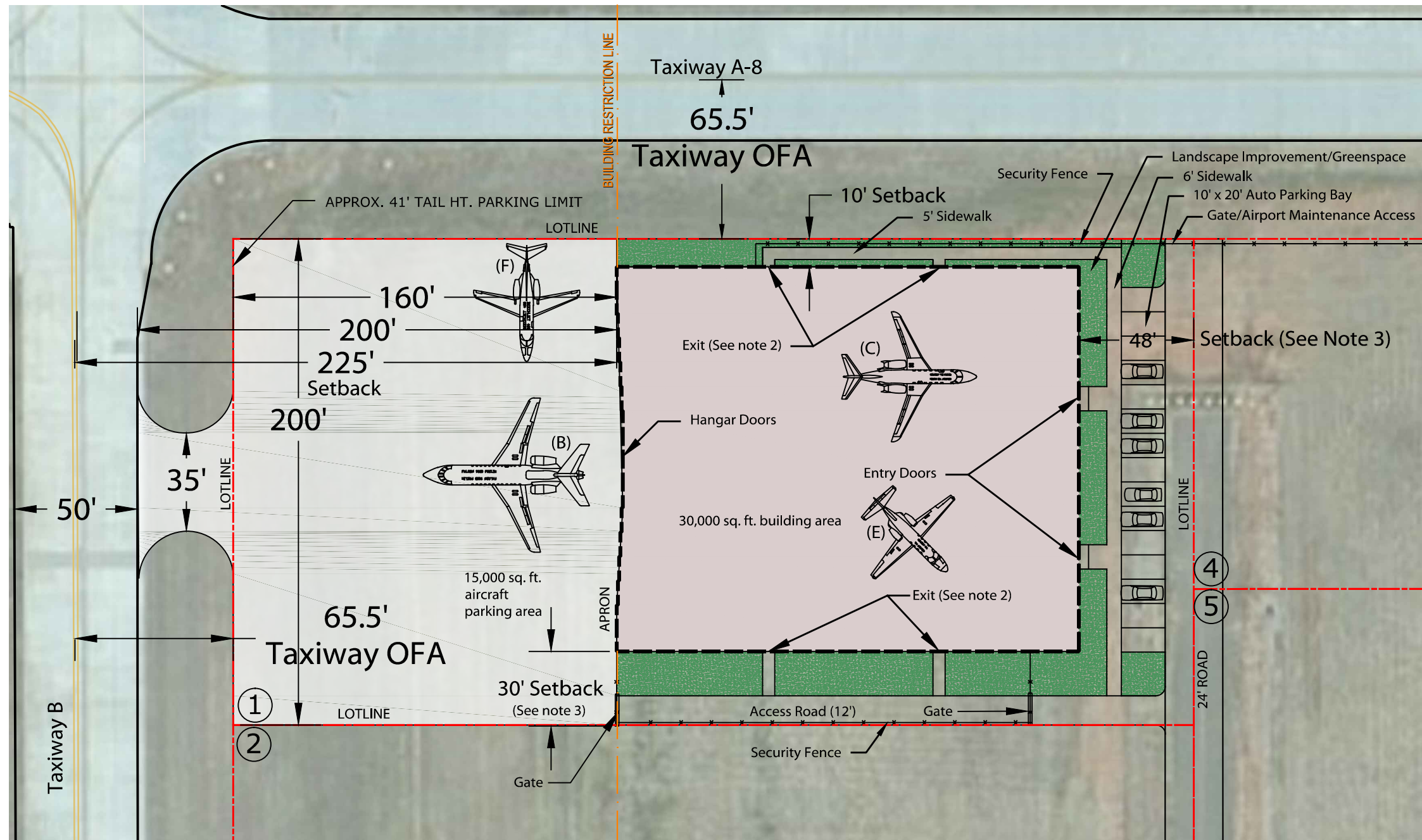
Example Aircraft Hangar Group I Layout Detail/Lot 1

- Lot Size @ 79,000 ft.²
- Hangar Size @ 30,000 ft.² (minimum 25,000 ft.²)
- Aircraft Access Door Height > 28 ft.
- Taxiway Access with Aircraft Parking Apron (31,500 ft.²)
- Auto Parking with Controlled Airside Access Road
- Landscape/Green Space Area

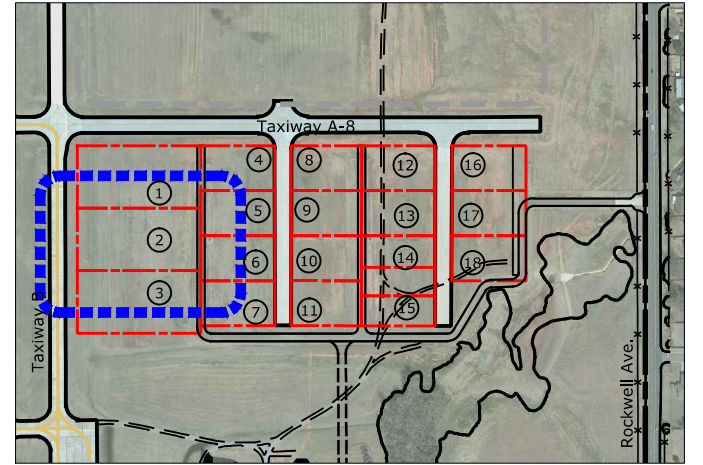
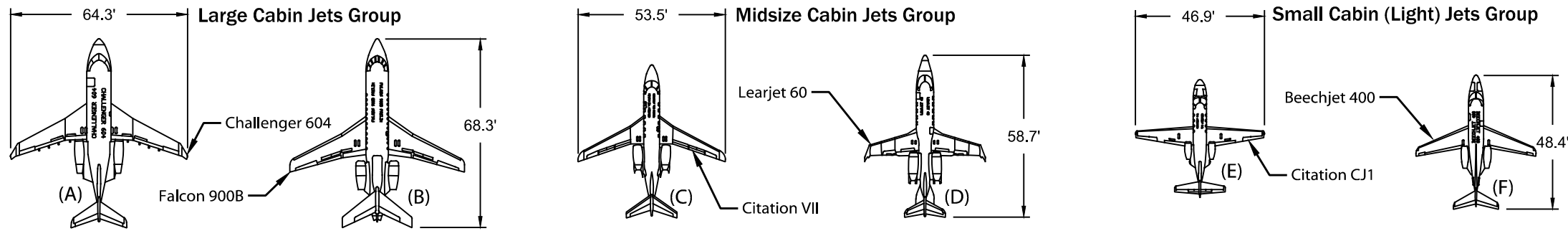
Notes:

1. See National Fire Protection Association (NFPA) 409 "Standard on Aircraft Hangars" (2011 Edition or Latest) for minimum requirements specifying aircraft hangar construction types, fire protection, hangar floor gradient, trench drains, and oil/gas separation.
2. See NFPA 101 "Life Safety Codes" (2012 Edition or Latest) for minimum requirements specifying the number of pedestrian exits for each hangar.
3. See International Building Code (IBC)-2012 Edition or latest for regulations regarding clear space distance between hangars and NFPA 409 for fire wall protection requirements. Separation criteria can range between 60 feet and zero feet depending upon fire resistance rating specification of exterior wall.
4. A landscape plan for the designated landscape/greenspace areas associated with each lot is to be prepared by the lessee and submitted to the OKC Department of Airports for approval. All landscaping is to be maintained by the lessee.
5. The taxiway and taxilane object free area (TOFA) must remain clear of parked airplanes, parked automobiles, and above ground objects, except for those objects needed for air navigation or aircraft maneuvering.

Attachment 2 Aircraft Hangar Group I/Lot 1 Example Layout Detail



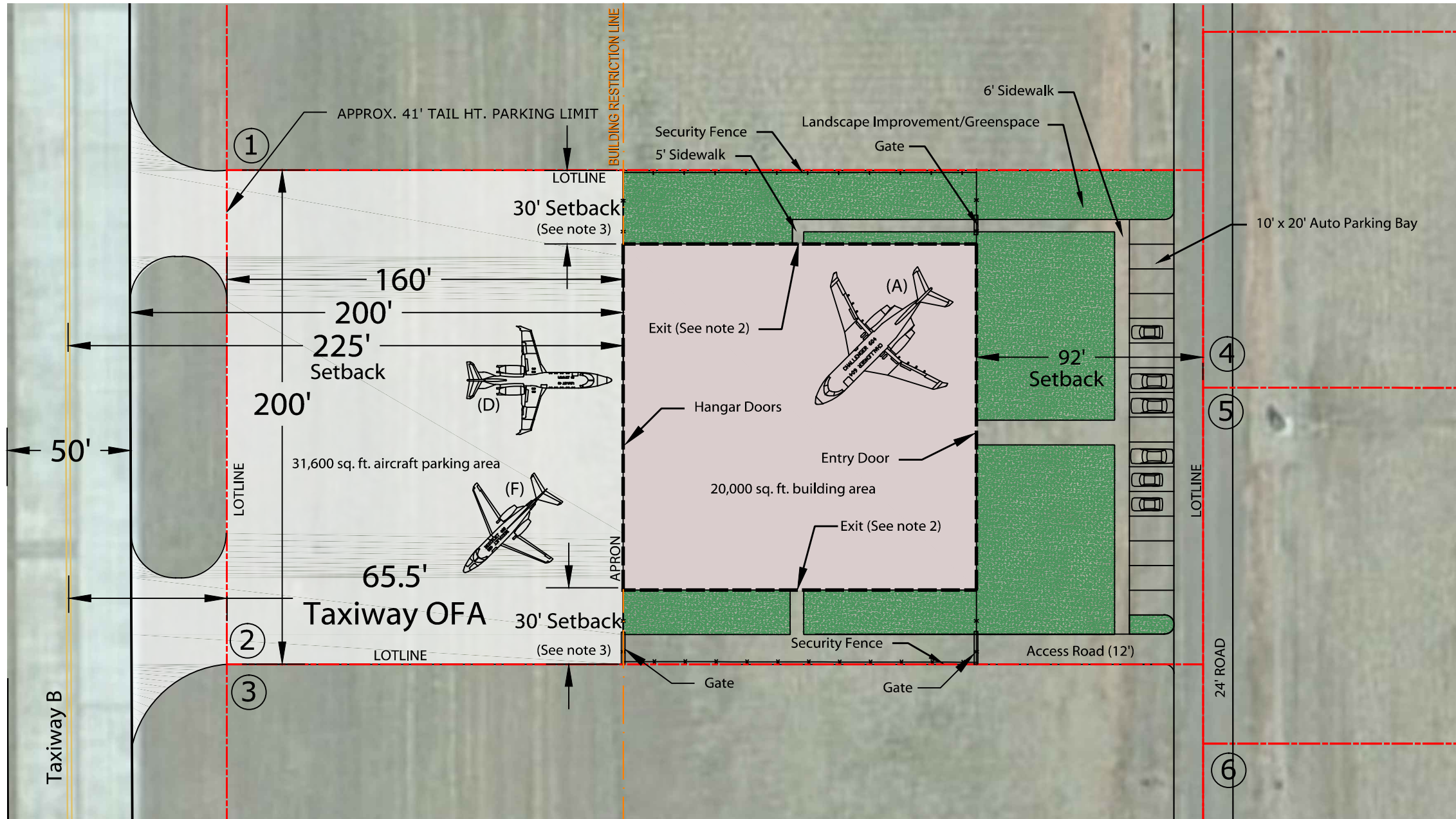
Aircraft Legend

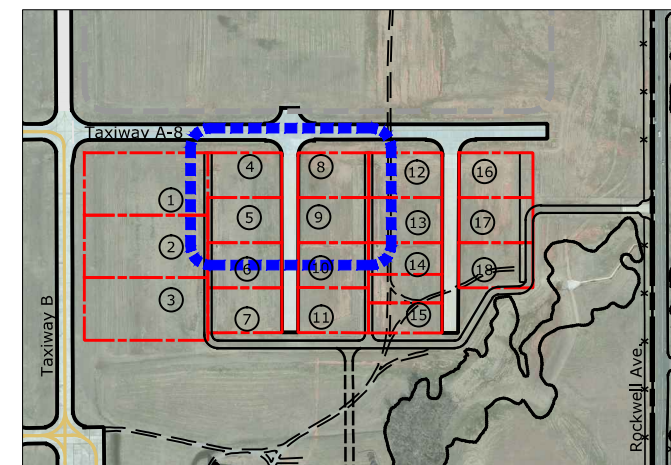
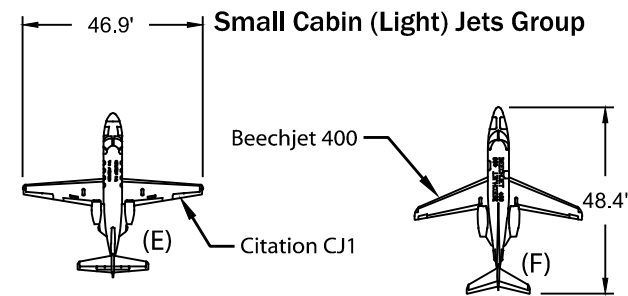
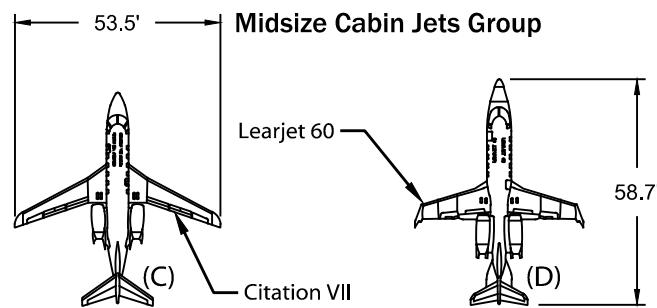
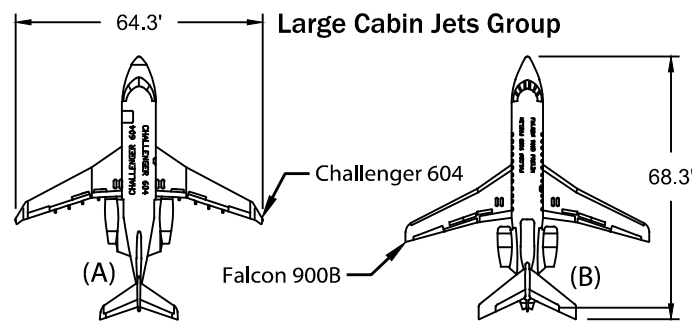


Location Map
Example Aircraft Hangar Group I Layout Detail/Lot 2

- Lot Size @ 79,000 ft.²
- Minimum hangar size @ 20,000 ft.²
- Aircraft Access Door Height > 28 ft.
- Taxiway Access with Aircraft Parking Apron (31,500 ft.²)
- Auto Parking with Controlled Airside Access Road
- Landscape/Green Space Area

- Notes:**
1. See National Fire Protection Association (NFPA) 409 "Standard on Aircraft Hangars" (2011 Edition or Latest) for minimum requirements specifying aircraft hangar construction types, fire protection, hangar floor gradient, trench drains, and oil/gas separation.
 2. See NFPA 101 "Life Safety Codes" (2012 Edition or Latest) for minimum requirements specifying the number of pedestrian exits for each hangar.
 3. See International Building Code (IBC)-2012 Edition or latest for regulations regarding clear space distance between hangars and NFPA 409 for fire wall protection requirements. Separation criteria can range between 60 feet and zero feet depending upon fire resistance rating specification of exterior wall.
 4. A landscape plan for the designated landscape/greenspace areas associated with each lot is to be prepared by the lessee and submitted to the OKC Department of Airports for approval. All landscaping is to be maintained by the lessee.
 5. The taxiway and taxilane object free area (TOFA) must remain clear of parked airplanes, parked automobiles, and above ground objects, except for those objects needed for air navigation or aircraft maneuvering.





Location Map

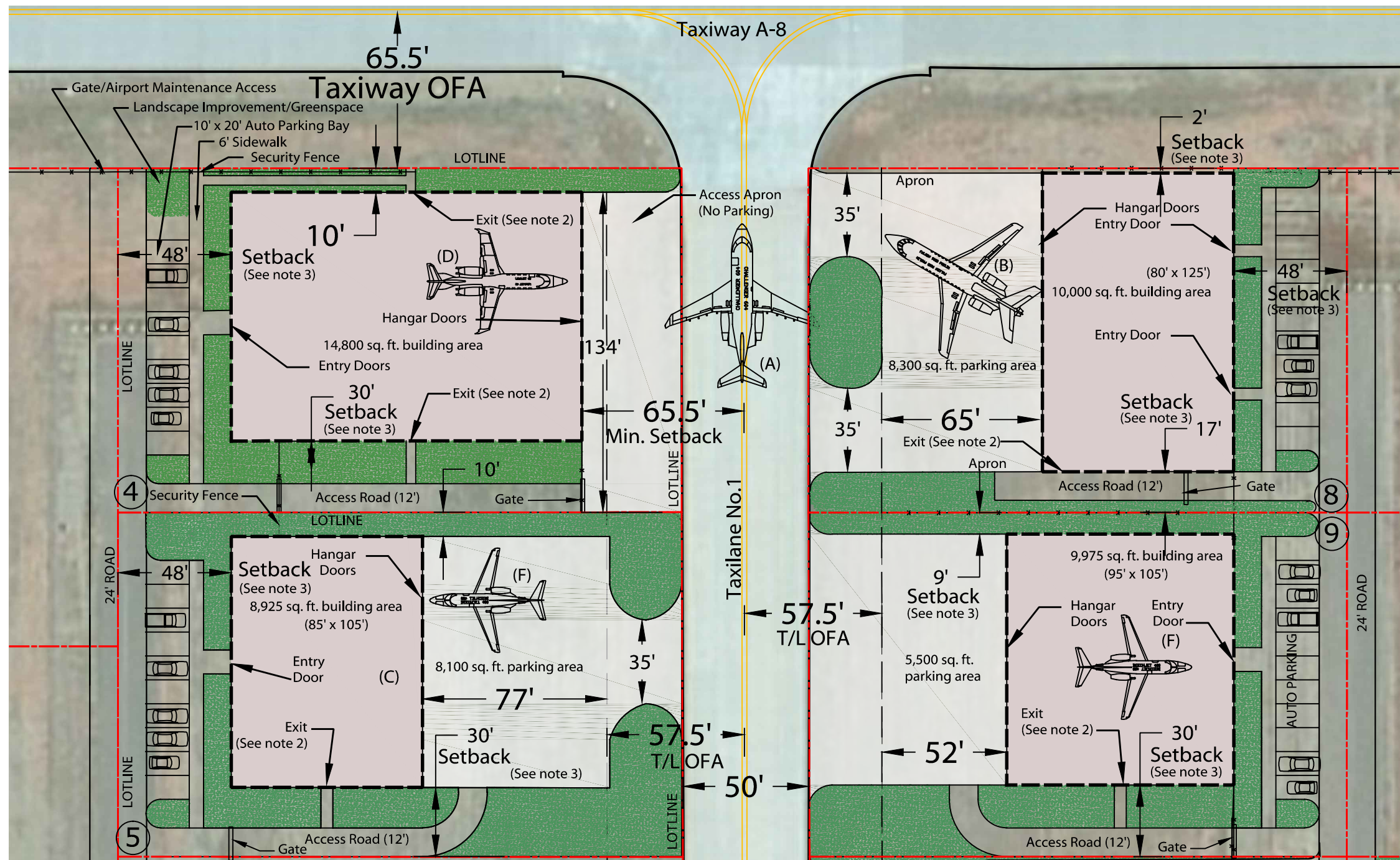
Example Aircraft Hangar Group II or III Layout Detail/ Lots 4, 5, 8, & 9

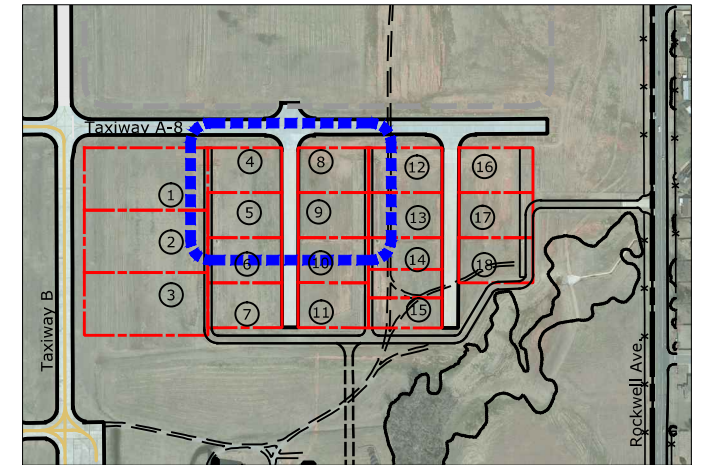
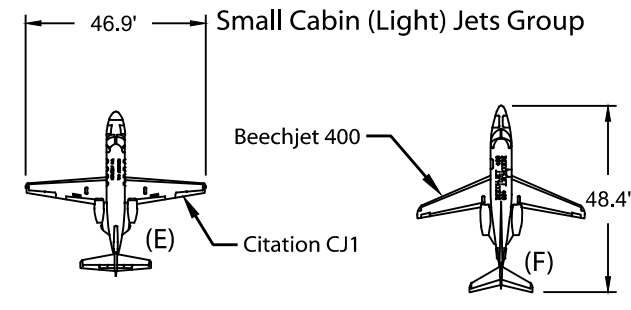
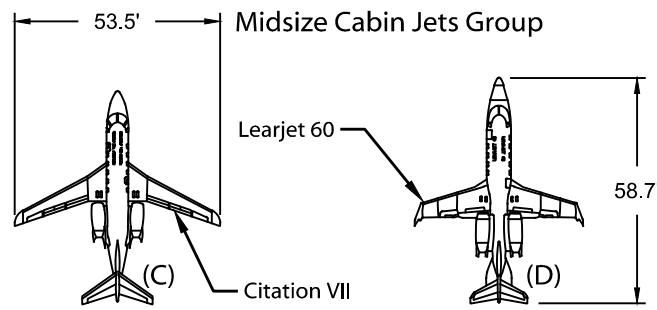
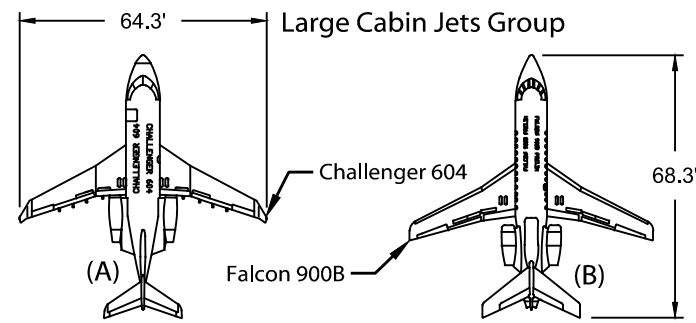
- Lot Size @ 33,400 ft.²
- Lot 4 hangar size @ 14,800 ft.² (minimum 10,000 ft.²)
- Lot 8 hangar size @ 10,000 ft.² (minimum 10,000 ft.²)
- Lot 5 hangar size @ 8,925 ft.² (minimum 8,000 ft.²)
- Lot 9 hangar size @ 9,975 ft.² (minimum 8,000 ft.²)
- Aircraft Access Door Height < or = 28 ft.
- Taxilane Access with Optional Aircraft Parking Apron
- Auto Parking with Controlled Airside Access Road
- Landscape/Green Space Area

Notes:

1. See National Fire Protection Association (NFPA) 409 "Standard on Aircraft Hangars" (2011 Edition or Latest) for minimum requirements specifying aircraft hangar construction types, fire protection, hangar floor gradient, trench drains, and oil/gas separation.
2. See NFPA 101 "Life Safety Codes" (2012 Edition or Latest) for minimum requirements specifying the number of pedestrian exits for each hangar.
3. See International Building Code (IBC)-2012 Edition or latest for regulations regarding clear space distance between hangars and NFPA 409 for fire wall protection requirements. Separation criteria can range between 60 feet and zero feet depending upon fire resistance rating specification of exterior wall.
4. A landscape plan for the designated landscape/greenspace areas associated with each lot is to be prepared by the lessee and submitted to the OKC Department of Airports for approval. All landscaping is to be maintained by the lessee.
5. The taxiway and taxilane object free area (TOFA) must remain clear of parked airplanes, parked automobiles, and above ground objects, except for those objects needed for air navigation or aircraft maneuvering.

Attachment 4 **Aircraft Hangar Group II or III/Lots 4, 5, 8, & 9 Example Layout Detail**





Location Map

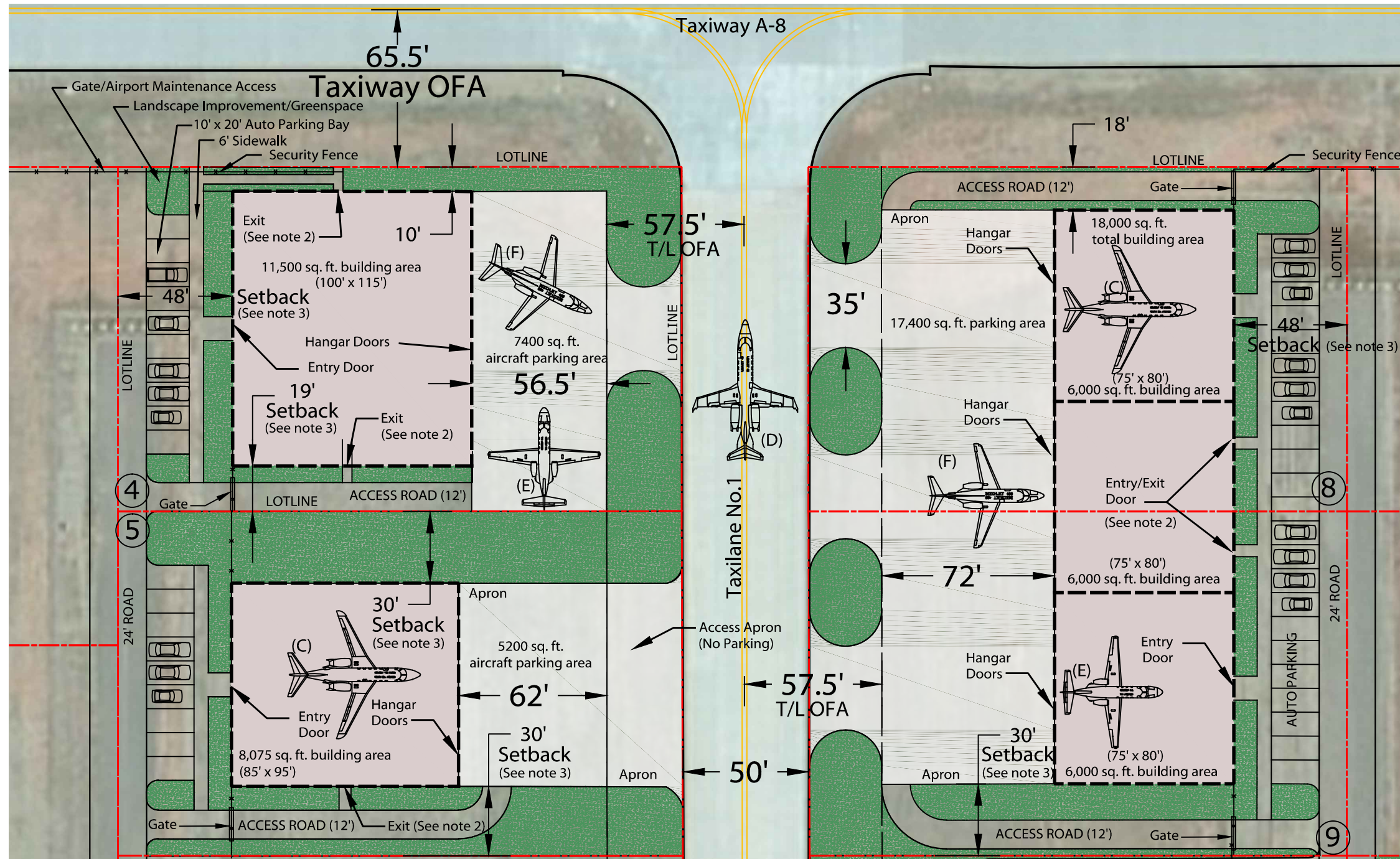
Example Aircraft Hangar Group II or III Layout Detail/ Lots 4, 5, 8, & 9

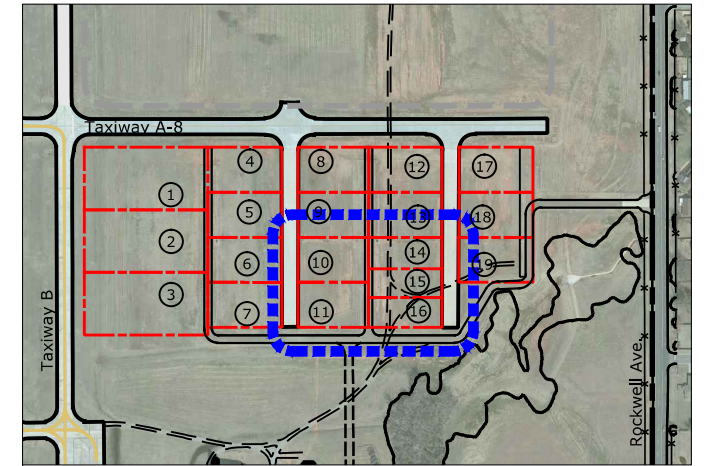
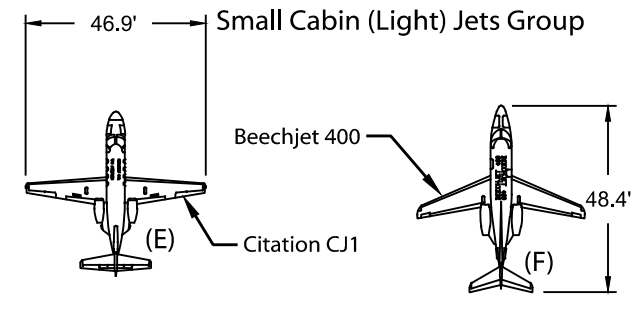
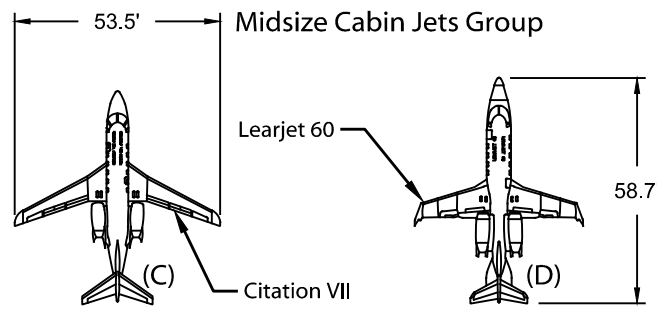
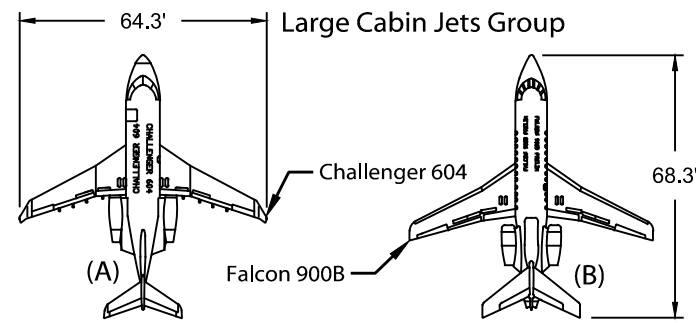
- Lot Size @ 33,400 ft.²
- Lot 4 hangar size @ 11,500 ft.² (minimum 10,000 ft.²)
- Lot 8 & 9 hangar size 3 @ 6,000 ft.² ea.
- Lot 5 hangar size @ 8,075 ft.² (minimum 8,000 ft.²)
- Aircraft Access Door Height < or = 28 ft.
- Taxilane Access with Optional Aircraft Parking Apron
- Auto Parking with Controlled Airside Access Road
- Landscape/Green Space Area

Notes:

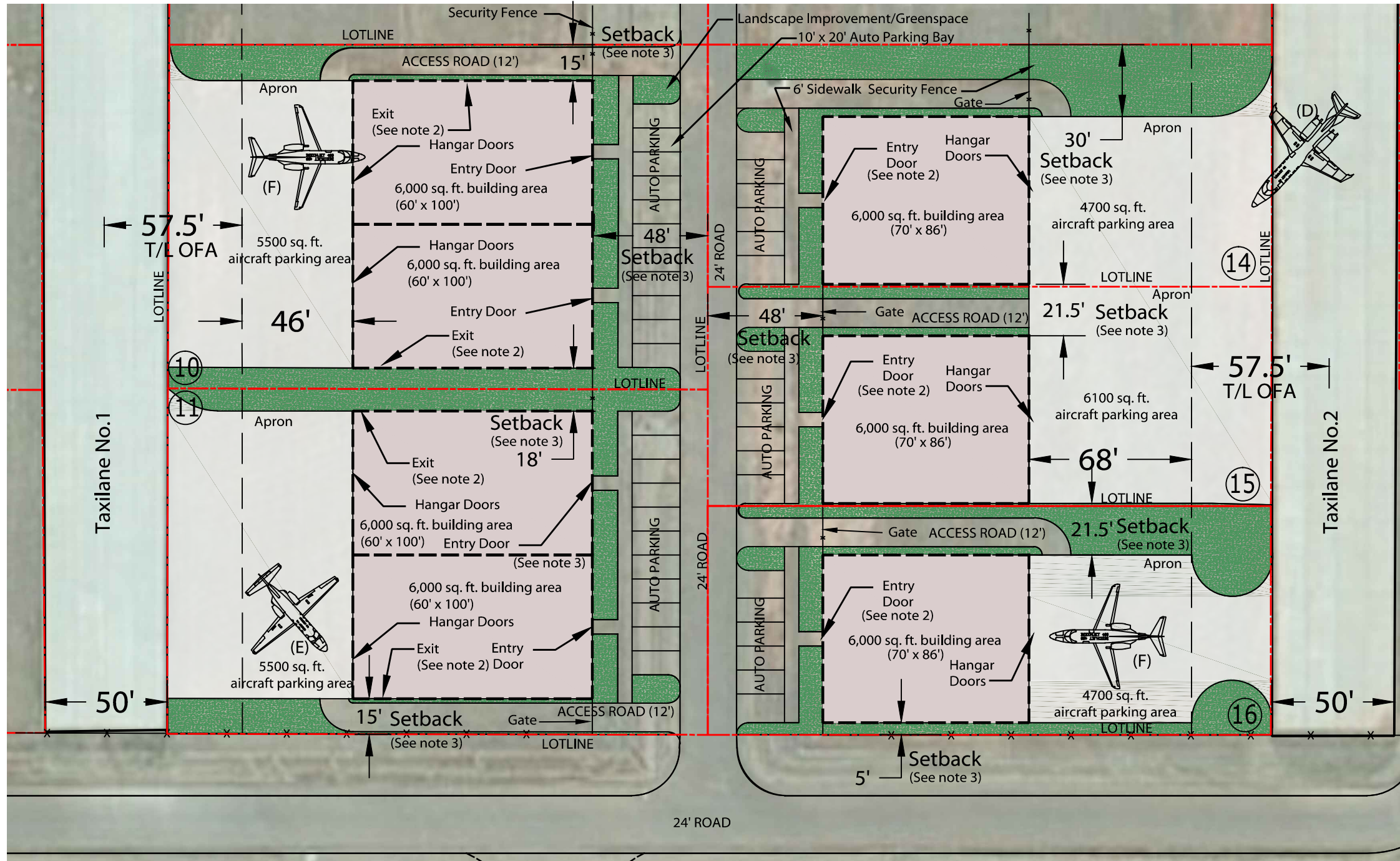
1. See National Fire Protection Association (NFPA) 409 "Standard on Aircraft Hangars" (2011 Edition or Latest) for minimum requirements specifying aircraft hangar construction types, fire protection, hangar floor gradient, trench drains, and oil/gas separation.
2. See NFPA 101 "Life Safety Codes" (2012 Edition or Latest) for minimum requirements specifying the number of pedestrian exits for each hangar.
3. See International Building Code (IBC)-2012 Edition or latest for regulations regarding clear space distance between hangars and NFPA 409 for fire wall protection requirements. Separation criteria can range between 60 feet and zero feet depending upon fire resistance rating specification of exterior wall.
4. A landscape plan for the designated landscape/greenspace areas associated with each lot is to be prepared by the lessee and submitted to the OKC Department of Airports for approval. All landscaping is to be maintained by the lessee.
5. The taxiway and taxilane object free area (TOFA) must remain clear of parked airplanes, parked automobiles, and above ground objects, except for those objects needed for air navigation or aircraft maneuvering.

Attachment 5 **Aircraft Hangar Group II or III/Lots 4, 5, 8, & 9 Example Layout Detail**





Location Map
Example Aircraft Hangar Group II or III Layout Detail/ Lots 10, 11, 14, 15 & 16

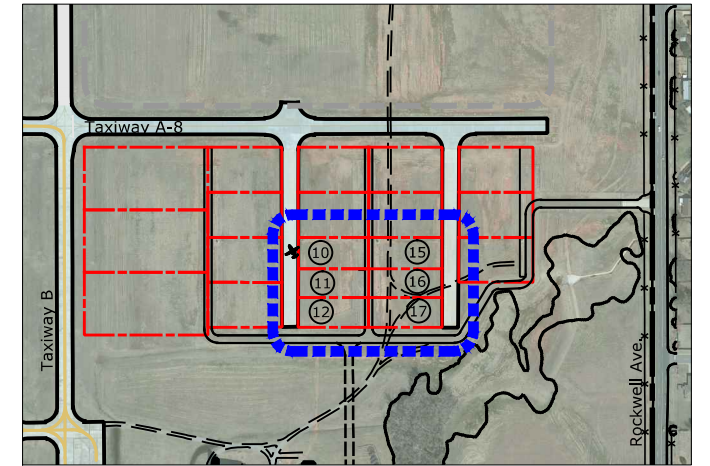
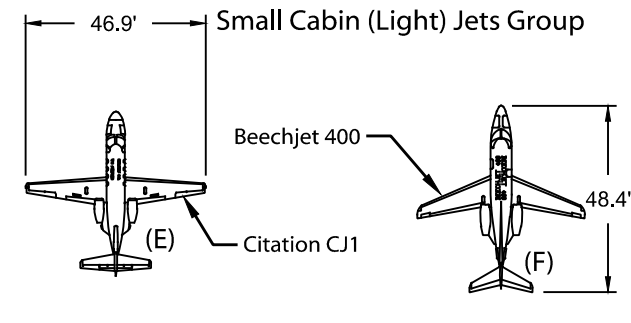
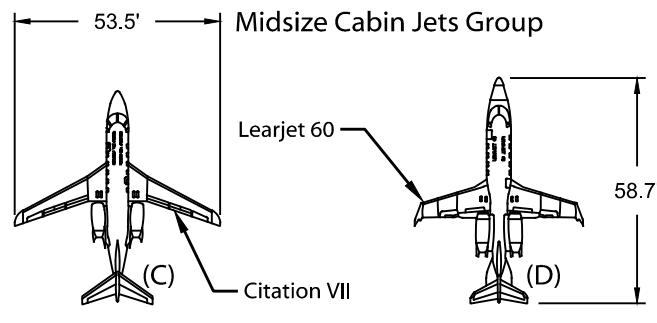
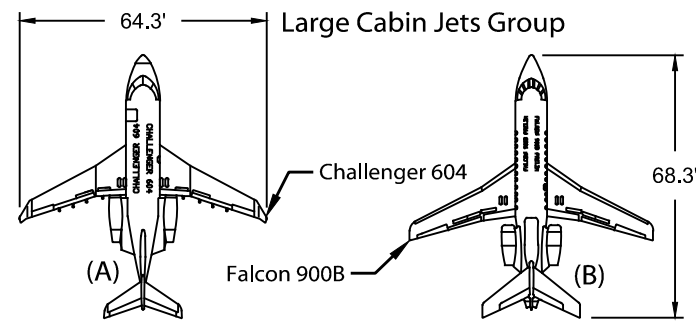


- Lot sizes @ 33,400 ft.² (Lots 10 & 11)
- Lots 10 & 11 minimum hangar size: 2 @ 6,000 ft.² ea.
- Lot sizes @ 21,300-23,700 ft.² (Lots 14, 15 & 16)
- Lots 14, 15 & 16 minimum hangar sizes @ 6,000 ft.² ea.
- Aircraft Door Height @ < or = 28 ft.
- Taxilane Access with Optional Aircraft Parking Apron
- Direct taxilane and connector taxiway access (Taxiway 'A-8' to Taxiway 'B')
- Controlled landside vehicular access to aircraft apron
- Auto parking

Notes:

1. See National Fire Protection Association (NFPA) 409 "Standard on Aircraft Hangars" (2011 Edition or Latest) for minimum requirements specifying aircraft hangar construction types, fire protection, hangar floor gradient, trench drains, and oil/gas separation.
2. See NFPA 101 "Life Safety Codes" (2012 Edition or Latest) for minimum requirements specifying the number of pedestrian exits for each hangar.
3. See International Building Code (IBC)-2012 Edition or latest for regulations regarding clear space distance between hangars and NFPA 409 for fire wall protection requirements. Separation criteria can range between 60 feet and zero feet depending upon fire resistance rating specification of exterior wall.
4. A landscape plan for the designated landscape/greenspace areas associated with each lot is to be prepared by the lessee and submitted to the OKC Department of Airports for approval. All landscaping is to be maintained by the lessee.
5. The taxiway and taxilane object free area (TOFA) must remain clear of parked airplanes, parked automobiles, and above ground objects, except for those objects needed for air navigation or aircraft maneuvering.

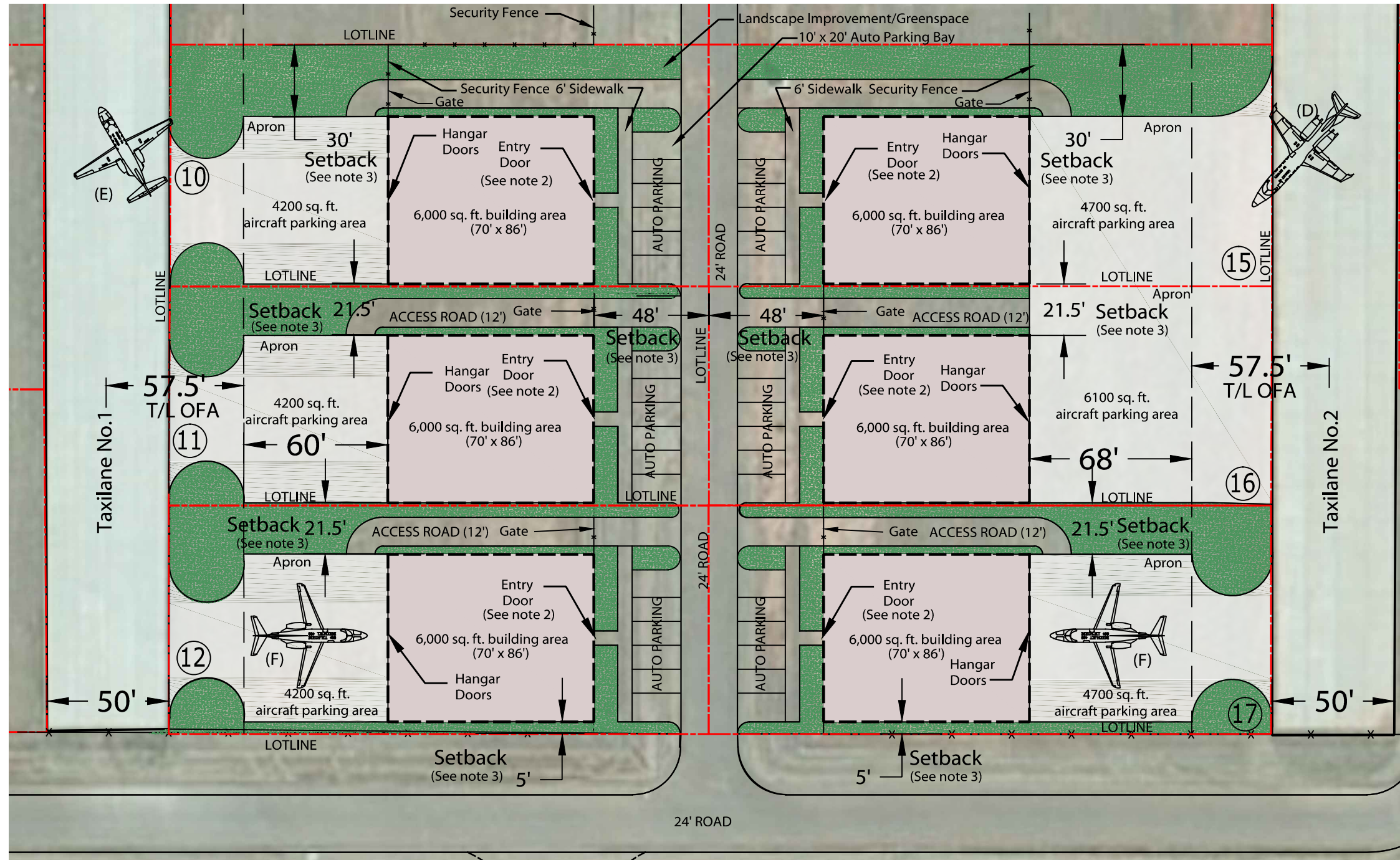
Attachment 6 **Aircraft Hangar Group II or III/Lots 10, 11, 14, 15 & 16 Example Layout Detail**



Location Map

**Example Aircraft Hangar Group II or III Layout Detail/
Lots 10-12 & 15-17**

- Lot sizes @ 20,600-23,800 ft.²
- Minimum hangar sizes @ 6,000 ft.² ea.
- Aircraft Door Height @ < or = 28 ft.
- Taxilane Access with Optional Aircraft Parking Apron
- Direct taxilane and connector taxiway access (Taxiway 'A-8' to Taxiway 'B')
- Controlled landside vehicular access to aircraft apron
- Auto parking



Notes:

1. See National Fire Protection Association (NFPA) 409 "Standard on Aircraft Hangars" (2011 Edition or Latest) for minimum requirements specifying aircraft hangar construction types, fire protection, hangar floor gradient, trench drains, and oil/gas separation.
2. See NFPA 101 "Life Safety Codes" (2012 Edition or Latest) for minimum requirements specifying the number of pedestrian exits for each hangar.
3. See International Building Code (IBC)-2012 Edition or latest for regulations regarding clear space distance between hangars and NFPA 409 for fire wall protection requirements. Separation criteria can range between 60 feet and zero feet depending upon fire resistance rating specification of exterior wall.
4. A landscape plan for the designated landscape/greenspace areas associated with each lot is to be prepared by the lessee and submitted to the OKC Department of Airports for approval. All landscaping is to be maintained by the lessee.
5. The taxiway and taxilane object free area (TOFA) must remain clear of parked airplanes, parked automobiles, and above ground objects, except for those objects needed for air navigation or aircraft maneuvering.

Attachment 7 **Aircraft Hangar Group II or III/Lots 10-12 & 15-17 Example Layout Detail**



Wiley Post Airport



Mead & Hunt